

L5 - CULTURAL PRACTICE, SOCIO-ECONOMY AND EDUCATION



5.1. Art and Communication

5.2. Territory, Identities, Labour and Conflicts

5.3. Millennium Ecosystem Assessment



UFMT



michelesato@gmail.com



São Pedro de Joselândia
MT - BRAZIL

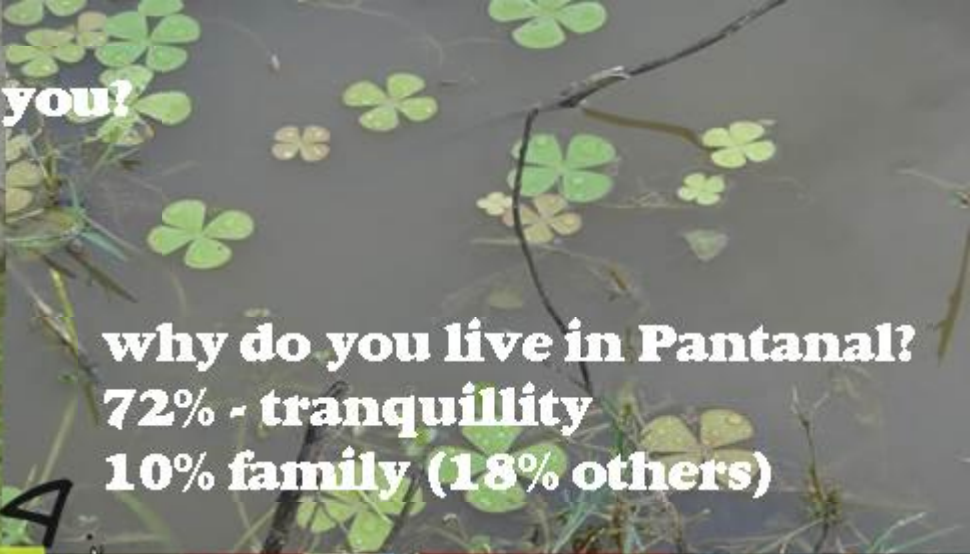
Environmental education, communication and art research group
INAU – CPP - UFMT

mimi: pantanal flower April11





what is Pantanal for you?
52% water
37% animal
(11% others)



why do you live in Pantanal?
72% - tranquillity
10% family (18% others)



What do you need to be happy?
58% - health 14% - peace
14% friends (14% others)



what does science mean to you?
63% no answer
23% environment (14% others)



Joselândia: 2.157 people, Pantanal of Mato Grosso, Brazil

5.1. art and communication

GPEA, ELPC, SESI, SEDUC, SESC



EDUCATION & COMMUNICATION → opinion and decision make (public policy)

- Scientific divulgation
- Scientific Journalism
- Edu-communication
- Science education (2 students of primary and 3 of secondary level)
- Capacity building (school and community)
- Environmental and Communitarian School Projects (sustainable schools)



CNP



UFMT



Universidade Estadual de Mato Grosso do Sul



Scientists

Scientists, professors e
students

I. Scientific production
and publication

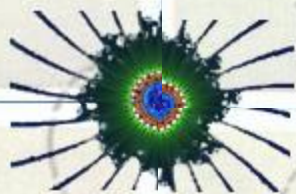
II. Scientific education
(all levels)

III. Scientific
dissemination
journalism

IV. SCIENTIFIC
AUDIENCE

Scientists, professors,
students and journalists

Scientists, professors,
students, journalists and
SOCIETY



SCIENTIFIC CULTURE

INAU
INSTITUTO NACIONAL DE CIÊNCIA
E TECNOLOGIA EM ÁREAS UNIDAS

LAB 5



UFMT



Universidade Estadual
de Mato Grosso do Sul



FAPEMAT



inct
Instituto Nacional
de Ciência e Tecnologia



CNPq
Conselho Nacional de Desenvolvimento
Científico e Tecnológico

Ciência e Tecnologia
Ministério da Ciência e Tecnologia

MENTAL MAPPING habitat's perception

Silva: mapping



Vochysia sp as cross curricular theme

Silva: *Vochysia* sp



INAU 2ª Assembleia Estadual Paulista do INCT Verde (INAU)

Introdução

Objetivos

Metodologia

Resultados

Conclusões

Agradecimentos

Referências

Palavras-chave

Resumo

Abstract

Keywords

Summary

Introduction

Objectives

Methodology

Results

Conclusions

Thanks

References

Keywords

Summary



PLANNING / DEVELOPMENT

- “Training” for teachers and community’s members
- Scientific journalism
- Booklet – Joselandia and its history

5.2. identities, labour and conflicts

GPEA, SEMA, REMTEA, iC, UFSCar, UFF



IDENTITY, LABOUR AND CONFLICTS → quality of life

- Mapping identity related to labour
- Mapping social-environmental conflicts related to work
- Labour – solidarity and popular economy
- Labour and biodiversity
- Gender and empowerment

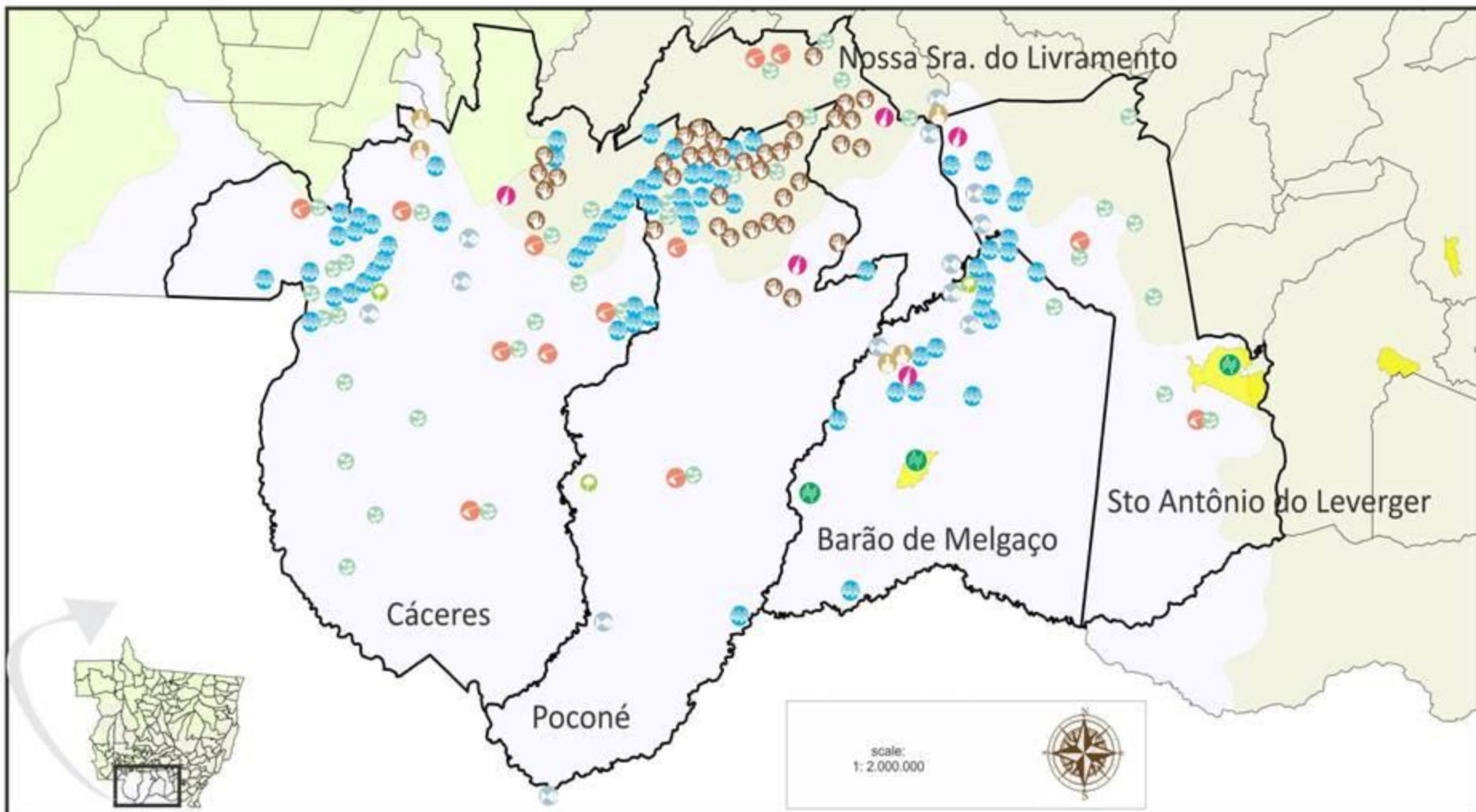


UFMT



Universidade Estadual
de Mato Grosso do Sul





LEGEND

PROTECTED AREAS

 Indigenous Territory

BIOMES

 Amazonia

 Cerrado

 Pantanal

SOCIAL GROUPS

 small family farmers

 settlers

 artisans

 river border inhabitants

 extractivist workers

 indigenous peoples

 groups of siriri and cururu

 pantanal's communities and peoples

 black descendant slave people

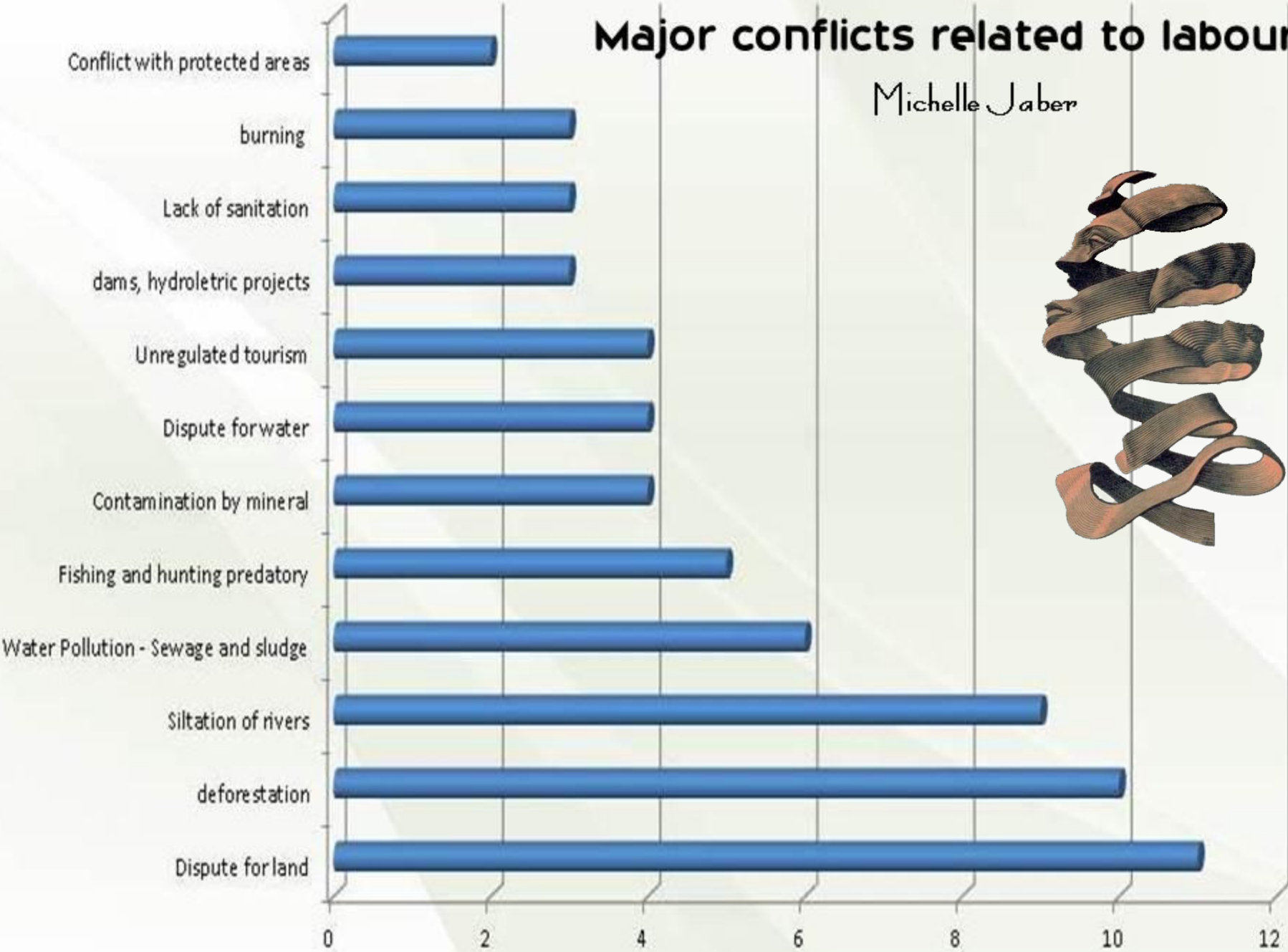
Regina Silva



Organization: R. Silva; M. Jaber, M. Sato, 2011.

Major conflicts related to labour

Michelle Jaber



Caetano: labour

SOLIDARITY ECONOMY AND POPULAR LABOUR Association (course) Gender Popular labour's mapping

INAU
INSTITUTO NACIONAL DE CIÊNCIA
E TECNOLOGIA EM ÁREAS UNIDAS

LAB 5



CIT



UFMT



Universidade Estadual
de Mato Grosso do Sul



Ciência e Tecnologia
Ministério da Ciência e Tecnologia





PLANNING / DEVELOPMENT

- Mapping conflicts which disturb the labour
- Mapping of “ecosystem services” with emphasis on solidarity and popular economy

5.3. millennium ecosystem assessment

SESC, OPAN, QUERCUS, SGA, UNU, UNESCO



CULTURE → public policy of day by day life

- Cultural expressions
- Way of life and relation to nature (services)
- Law and Pantanal protection
- Canoe, mobility and art
- Festivities and provision services
- Mythology and cultural services
- Musicality and "viola de cocho"



UFMT



Universidade Estadual
de Mato Grosso do Sul



PROVISION
fruits, oil,
timber, fiber



SUPPORT
photosynthesis, soil,
water, plants



Sato - Joselândia

INAU
INSTITUTO NACIONAL DE CIÊNCIA
E TECNOLOGIA EM ÁREAS ÚMIDAS

LAB 5



faith, values, aesthetic,
art, education

CULTURE



UFMT



UEMS

Universidade Estadual
de Mato Grosso do Sul



Fundect



FAPEMAT



inct
Instituto Nacional
de Ciência e Tecnologia



CNPq
Conselho Nacional de Desenvolvimento
Científico e Tecnológico

REGULATION

water protection, climate
regulation, CO₂ in the atmosphere

Ciência e Tecnologia
Ministério da Ciência e Tecnologia



Quadros: canoe

Canoe as mobility tool, but also as a sculpture!
CULTURAL expression of Pantanal's aesthetic

MILLENNIUM ECOSYSTEM ASSESSMENT CULTURAL DIMENSION

LAW: encouragement and empowerment by the
Pantanal's law

BIRDS: local knowledge related to ecosystem services

CANOE: traditional knowledge, cultural tourism

FESTIVITIES & MUSICALITY: faith and
tradition, ecosystem services for food and
party's organisation

MYTHOLOGY: values, faith and believes
of "enchanted beings" and social
relevance to the local culture



CIP



UFMT

UEMS



Fundect



inct



Ciência e Tecnologia
Ministério da Ciência e Tecnologia





PLANNING / DEVELOPMENT

- Booklet: Pantanal mythology
- Booklet: Pantanal's Law
- Booklet: Joselândia festivities
- Partnership with UNESCO (natural and cultural heritage)

The inhabitant's perception about habitat and dialogue between scientific and popular knowledge
(support, provision and regulation)

L5



L1

edu-communication

5.1



Scientific education on climate change, carbon fluxes and wetlands
(support and regulation)

L2



5.2



labour

Vochysia sp., popular knowledge about birds, amphibians (secondary students) and seasonal animals
(provision and support)

L3



5.3



culture

Scientific audience to the bio-prospection in Pantanal
(provision and regulation)

L4



**Anything else you're interested in
is not going to happen if you can't breathe the air
and drink the water.**

**Don't sit this one out.
Do something!**

**You are by accident of fate alive
at an absolutely critical moment
in the history of our planet.**

- *Carl Sagan*

